



Swan Agro

ISO 9001:2008 CERTIFIED COMPANY



Swan Agro

ISO 9001:2008 CERTIFIED COMPANY

NEW SWAN MULTITECH LIMITED

Kohara, Machiwara Road, Vill. Raian, P.O Heeran, Ludhiana, Punjab, INDIA

Phone: +91-161-2833364, 2833622 Fax: +91-161-2532622

E-mail: new-swan@usa.net, agrodesk@swanindia.com

Website: www.swanagro.in

Powering Innovative Farmers



Content / Index

PARTICULARS	PAGE NO.
Company Profile	03
Why Swan Agro ?	04
Swan Group of Companies	05
Usp of Our Rotary Tiller	06-09
TILLAGE	
Rotary Tiller Series	10-23
Harrow	24-27
Plough	28-33
Cultivator	34-35
Disc Ridger	36-37
Sub soiler	38-41
Mulcher	42-43
Inter Cultivation Series	44-51
SEEDING & PLANTATION	
Roto Seeder	52-53
Seed Drill	54-55
Potato Planter	56-57
PLANT PROTECTION	
Fertilizer Spreader	58-59
REAPER & HARVEST	
Potato Harvester	60-61
Reaper Binder	62-63
Straw Reaper	64-65
HAULAGE	
Trailer	66-67

Company Profile

NEW SWAN MULTITECH LIMITED established in year 2009 is part of NEW SWAN GROUP. New Swan Group for past 3 decades has grown steadily under stable leadership, sound business practices and corporate culture that strive to be best in the industry.

New Swan has very strong business relations with companies from Europe, Middle East, Asia and some African countries. New Swan Multitech Limited is one of the leading & reputed manufacturer-exporter of high quality farm machineries in India. Our company is accredited by ISO , QS & TS certification for following world class management system and manufacturing world class products.

NSML under brand SWAN AGRO has diverse range of farm machineries products which include Rotary Tiller, Disc Plough, Disc Harrow, Potato Planter, Potato Digger, Potato Harvester, Roto Seeder, Seed Drill, Mulcher, Reaper & Binder, Straw Reaper, Sub Soiler, Post Hole Digger, Trailers, Fertilizer spreader, Rotary Slasher etc.

A strong customer-focused approach, global practices and a constant quest for top-class quality has enabled the company to sustain leadership in its major lines for business for over three decades.

WHY SWAN AGRO ?

-  Unmatched Quality
-  State of Art Manufacturing Facility
-  Innovation
-  Complete Business Support of our Dealer/Distributors
-  Ethical Business Practices
-  Responsive Management & Marketing Team
-  Skilled Manpower

VISION

We manufacture international quality with domestic pricing. Our VISION is our Customers – we are customer centric in everything we do and which reflects in our company.

MISSION

To provide you the farm machineries that are of the highest standards with best services & more reliable prices. We assure you that you will find the best customer satisfaction in our company products. We believe on long term business.



Swan Agro

SWAN GROUP OF COMPANIES



NEW SWAN, VITHALAPUR (GUJARAT)



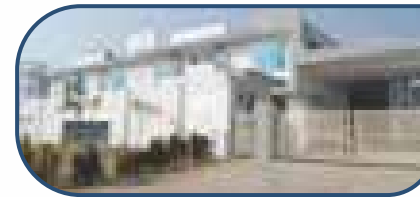
NEW SWAN MULTITECH LIMITED (Agro Division)



NEW SWAN COMPONENTS PVT. LTD.



NEW SWAN AUTOCOMP PVT. LTD.



NEW SWAN ENTERPRISES - III



NEW SWAN ENTERPRISES – II



NEW SWAN ENTERPRISES



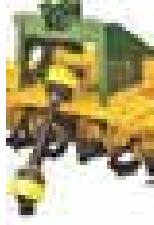
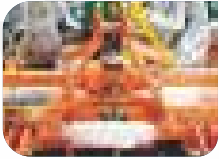
Swan Agro

Usp Of Our Rotary Tiller

Hitch

Local supplier provide strip type of hitch

Swan agro rotary tiller has sheet metal-Robust type hitch

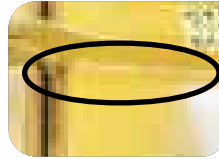


Benefit: Chance of breakage is minimized and alignment of linkage will be proper

Welding Technique

Local suppliers do chain type welding

Swan agro does layer type welding



Benefit: Increases durability of machine and reduces vibration in machine overall.

Hinge Plate

Local supplier provides Half hinge plate

Swan Agro provides full hinge plate & pipe passes through plate



Benefit: The pipe passes through the hinge plates overall strength is increased and breakage in machine body is reduced

Gear Box Clamp

Local supplier provides sheet Metal Type Gear Box Clamp

Swan Agro provides bracket type, heavy duty gear box clamp



Benefit: The clamp absorbs vibration and pipe remain intact with basic structure thereby giving longer life.

Blade Arrangement

Helical type blade arrangement-boron steel blade made in Italy



Benefit: This arrangement ensures at a time one blades strikes on ground, thereby overall load on machine and tractor is reduced resulting better performance.

Main Body Clearance

Higher clearance between blade and main body



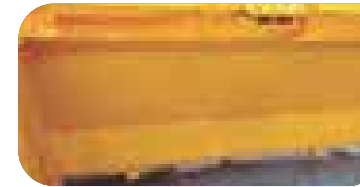
Benefit: While operating, when soil is pulverized and soil is thrown up on machine body the overall load on machine is reduced due to high clearance between main body and blade.

Operator gets sufficient time while working in sticky soil condition to get machine cleaned due to high clearance between blade & body.

Saves time and fuel consumption

Dust Cover

Higher clearance between blade and main body

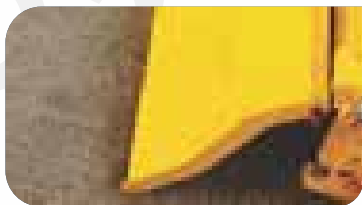


Benefit: Angled dust cover facilitates circular movement of soil during operation. Ensures reduction in overall load on machine, tractors and reduces overall fuel consumption



Deflector

Specially designed deflector for smooth flow of sand



Benefit: During operation when soil hits deflector, the specially designed deflector gives extra space due to designed angles, thereby reducing overall load on machine and tractor

Side Handled

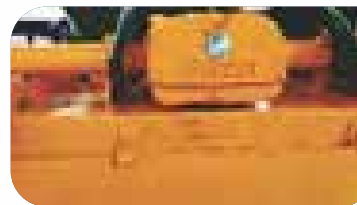
Side handle cum guard



Benefit: Enables easy movement of the machine if required and also protects any damage to body from side.

Gear Box

Hanging gear box to reduce heat factor



Benefit: As gear box is not rested on body but is hanging type and there is slight gap between gear box and main body. Due to this while operation heat produced is circulated and is not transferred to body

Side Gear Support Plate

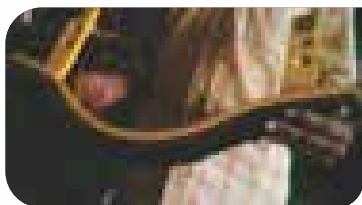
Side gear with support plate



Benefit: Side gear is supported with additional plate and can be seen after removing of the side gear cover. This feature provides additional support to the side gears and prevents from breakage during robust operation.

Hard Liner

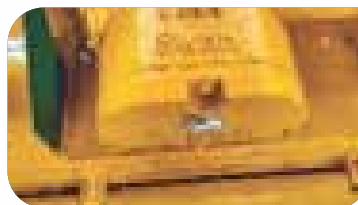
Use of hard liner for protection against wear out



Benefit: Wear out of the plate is reduced

Casting Thickness

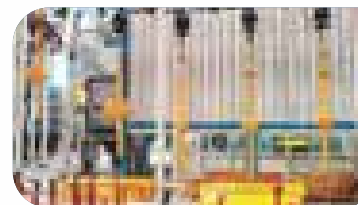
Heavy duty gear box with casting thickness 10-12mm



Benefit: Durability of gear box is increased and breakage is negligible while operating on tough soil.

Power Coating Plant

Automated powder coated plant



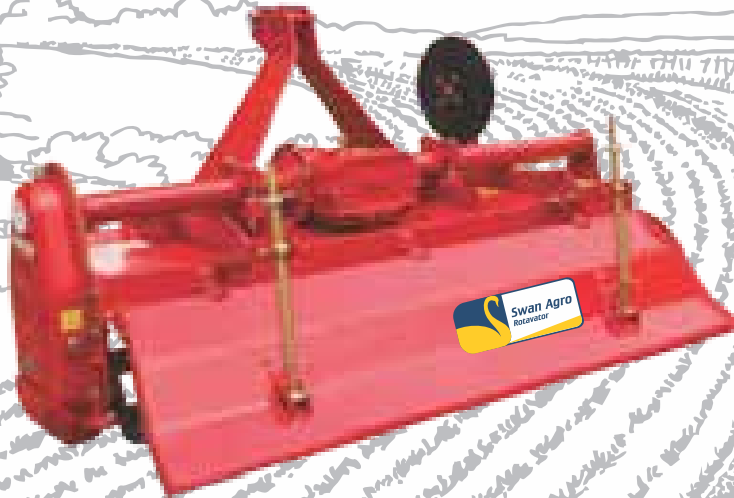
Benefit: This is fully Automatic plant imported from Gema, Switzerland. Powder coating of machines provides better finish to the product and shine in the product remain for longer period.



Features:

- ✓ Best used for Secondary Tillage operation
- ✓ Sturdy structure with less weight
- ✓ Specially designed Leakproof Casted Gear Box
- ✓ Blades are tempered and made of Boron Steel from Italy
- ✓ Available in L-Type or C-Type Blades- Interchangeable
- ✓ Export Quality Heavy-Duty Gear Box
- ✓ Nuts and Bolts are made of High Tensile Steel (10.9 Grade)
- ✓ Side transmission through gears providing smooth drive and longer service life
- ✓ Saves fuel & time
- ✓ Available from 1.40 mtr to 2.10 mtr size for 30 H.P to 60 H.P tractors
- ✓ Heavy-Duty PTO Shaft with Shear Bolt for overload protection

GYRO SERIES ROTARY TILLER



TECHNICAL SPECIFICATIONS OF GYRO SERIES ROTARY TILLER

Description/model	NSEGY RT 140	NSEGY RT 160	NSEGY RT 180	NSEGY RT 210
Overall Width (mm)	1500	1700	1900	2100
Tillage Width (mm)	1400	1600	1800	2000
Tillage Depth (mm)	120-150			
Gear Box	Single Speed/Multi-Speed			
Side Transmission	Gear Drive			
PTO Speed (R.P.M)	540/1000			
No. of Blades	42	48	54	60
Blade specifications	L type 4" / C type			
Weight (Kgs. Approx.)	350	370	390	410
Tractor Power (H.P)	30-35	35-45	45-50	50-60



Heavy Duty Hitch



Gear Box



Spl. Boron Still Blades



Before



After



Parking Stand

Swan Agro Gyro Series Rotary Tiller is especially designed for Secondary Tillage operation. This machine comes with more or extra blades which breaks lumps of soil more effectively and effectively does seed bed preparation soil conditioning, fertilizer incorporation, weed control & land scrapping. Available from size 4', 5', 6' & 7'

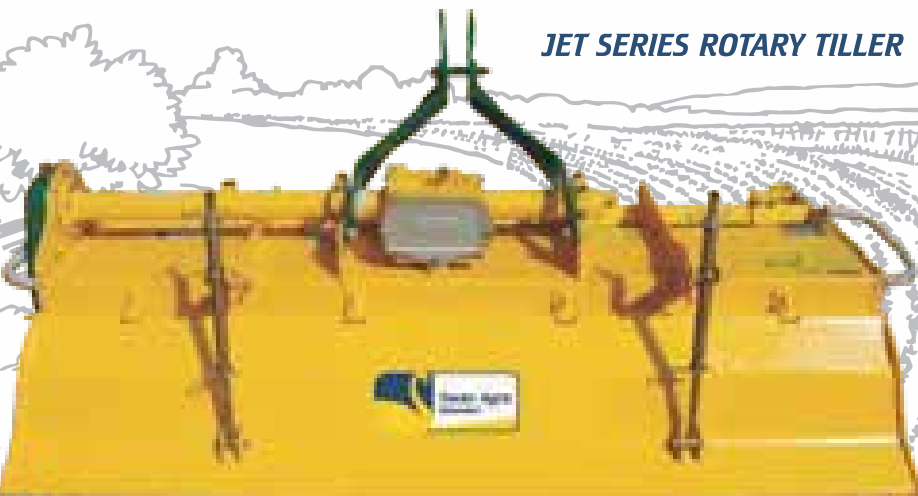


Swan Agro

Features:

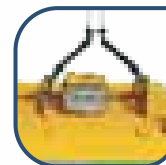
- ✓ Recommended for Sandy Soil operation & Heavy operation
- ✓ Specially designed Leakproof Casted Gear Box
- ✓ Blades are tempered & made of Boron Steel from Italy
- ✓ Available with L-Type or C-Type blades- Interchangeable
- ✓ Export Quality Heavy-Duty Gear Box
- ✓ Nuts and Bolts are made of High Tensile Steel (10.9 Grade).
- ✓ Side Transmission is driven through Gears providing Smooth Drive & Longer Service Life
- ✓ Save Fuel & Time
- ✓ Available from 1.25 mrt to 2.00 mtr size for 30 H.P to 60 H.P tractors
- ✓ Heavy-Duty PTO Shaft with Shear Bolt for overload protection

JET SERIES ROTARY TILLER

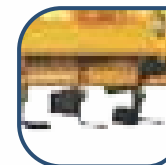


TECHNICAL SPECIFICATIONS OF JET SERIES ROTARY TILLER

Description/model	NSEJT RT 125	NSEJT RT 150	NSEJT RT 175	NSEJT RT 200
Overall Width (mm)	1550	1800	2050	2300
Tillage Width (mm)	1250	1500	1750	2000
Tillage Depth (mm)	120-150			
Gear Box	Single Speed / Multi - Speed			
Side Transmission	Gear Drive			
PTO Speed (RPM)	540/1000			
No. of Blades	30	36	42/48	48/54
Blade specifications	L type 5" / C type			
Weight (Kgs. Approx.)	380	420	460	500
Tractor Power (HP)	30-35	35-45	45-50	50-60



Heavy Duty Gear Box



Special Boron
Steel Blade



Before



After

Swan Agro Jet Series Rotary Tiller is designed for Medium Duty Operation. Better suited for operation on sandy soil and is particularly designed to serve efficiently in all type of crop and soil except black soil. Suitable for puddling in non-sinking field.

Available in working width 4', 5', 6', & 7'.

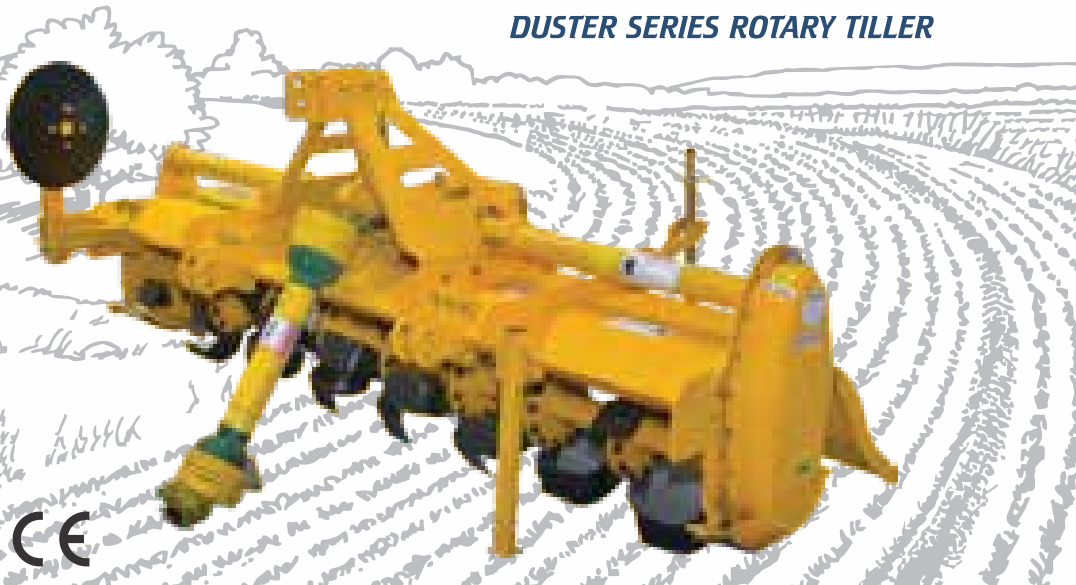


Swan Agro

Features:

- ✓ Best used in Light Soil
- ✓ Specially designed for light weight Rotary Tiller requirements for Light Soil operation
- ✓ Specially designed Leakproof Casted Gear Box
- ✓ Blades are tempered & made of Boron Steel from Italy
- ✓ Available with L-Type or C-Type Blades- Interchangeable
- ✓ Export Quality Heavy-Duty Gear Box
- ✓ Rotary Tiller frame is made of Heavy-Duty Pipe
- ✓ Nuts and Bolts are made of High Tensile Steel (10.9 Grade)
- ✓ Side Transmission is driven through Gears providing Smooth Drive & Longer Service Life
- ✓ Save Fuel & Time
- ✓ Available from 1.25 mrt to 2.00 mtr size for 30 H.P to 60 H.P tractors
- ✓ Heavy-Duty PTO Shaft with Shear Bolt for overload protection

DUSTER SERIES ROTARY TILLER



TECHNICAL SPECIFICATIONS OF DUSTER SERIES ROTARY TILLER

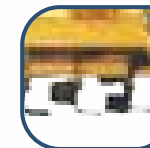
Description/model	NSEDS RT 125	NSEDS RT 150	NSEDS RT 175	NSEDS RT 200
Overall Width (mm)	1550	1800	2050	2300
Tillage Width (mm)	1250	1500	1750	2000
Tillage Depth (mm)	120-150			
Gear Box	Single Speed/ Multi Speed			
Side Transmission	Gear / Drive			
PTO Speed (RPM)	540/1000			
No. of Blades	30	36	42	48
Blade specifications	L type 5" / C type			
Weight (Kgs. Approx.)	330	350	370	390
Tractor Power (HP)	30-35	35-45	45-50	50-60



Heavy Duty Gear Box



Paking Stand



Special Boron Steel Blade



Before



After

Swan Agro Duster Series Rotary Tiller is used for Light soil operation with light duty Gear Box.

The application includes: Soil conditioning, weed control, fertilizer incorporation, seedbed preparation and puddling in wet land.

Most suitable for large & medium farmers and field preparation for crops like sugarcane, cotton, rice, potato, wheat, vegetables and dry land crops.

Available in Size : 4', 5', 6', 7'



Swan Agro

Features:

- ✓ Recommended for Heavy/Robust Operation
- ✓ Specially designed Leakproof Casted Gear Box
- ✓ Blades are tempered & made of Boron Steel from Italy
- ✓ Available with L-Type or C-Type Blades-Interchangeable
- ✓ Export Quality Heavy-Duty Gear Box
- ✓ Rotary Tiller frame is made of Heavy-Duty Pipe
- ✓ Nuts and Bolts are made of High Tensile Steel (10.9 grade)
- ✓ Side Transmission is driven through Gears providing Smooth Drive & Longer Service Life
- ✓ Saves fuel & time
- ✓ Available from 1.25 mrt to 2.25 mtr size for 30 H.P to 65 H.P tractors
- ✓ Heavy-Duty PTO Shaft with shear bolt for overload protection

STANDARD SERIES ROTARY TILLER



TECHNICAL SPECIFICATIONS OF STANDARD SERIES ROTARY TILLER

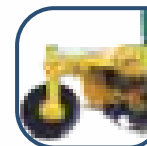
Description/model	NSESS RT 125	NSESS RT 150	NSESS RT 175	NSESS RT 200	NSESS RT 225
Overall Width (mm)	1550	1800	2050	2300	2550
Tillage Width (mm)	1250	1500	1750	2000	2250
Tillage Depth (mm)	150-180				
Gear Box	Single Speed / Multi Speed				
M/S Gear Box Model	Gear Drive				
PTO Speed (RPM)	540/1000				
No. of Blades	30	36	42/48	48/54	54/60
Blade specifications	L type 5" / C type				
Weight (Kgs. Approx.)	470	495	520	545	570
Tractor Power (HP)	30-35	35-45	45-50	50-60	60-65



Heavy Duty Hitch



Gear Box



Spl. Boron Steel Blades



Parking Stand



Before



After

SWAN AGRO Standard Series Rotary Tiller is especially designed Heavy and Robust operation. It is Most suitable for tilling soil for seed bed preparation soil conditioning, fertilizer incorporation, weed control & land scrapping. Available in working width 4', 5', 6', 7' & 8' under robust/ heavy operation.



Swan Agro

Features:

- ✓ Recommended for heavy-duty operations on hard and/or black soil
- ✓ Specially designed Leakproof Casted Gear Box
- ✓ High clearance between blades and frame
- ✓ Blades are tempered & made of Boron Steel from Italy
- ✓ Available with L-Type or C-Type Blades- Interchangeable
- ✓ Export Quality Heavy-Duty Gear Box
- ✓ Rotary Tiller frame is made of Heavy-Duty Pipe
- ✓ Nuts and Bolts are made of High Tensile Steel (10.9 Grade)
- ✓ Side Transmission is driven through Gears providing Smooth Drive & Longer Service Life
- ✓ Save Fuel & Time
- ✓ Available from 1.25 mrt to 3.25 mtr size for 30 H.P to 90 H.P tractors
- ✓ Heavy-Duty PTO Shaft with Shear Bolt for overload protection

SUPER SERIES ROTARY TILLER

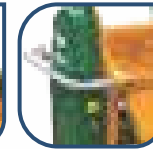


TECHNICAL SPECIFICATIONS OF SUPER SERIES ROTARY TILLER

Description/model	NSESU RT 125	NSESU RT 150	NSESU RT 175	NSESU RT 200	NSESU RT 225	NSESU RT 250	NSESU RT 275	NSESU RT 300	NSESU RT 325
Overall Width (mm)	1550	1800	2050	2300	2550	2800	3050	3300	3550
Tillage Width (mm)	1250	1500	1750	2000	2250	2500	2750	3000	3250
Tillage Depth (mm)	150-180								
Gear Box	Single Speed / Multi - Speed								
Side Transmission	Gear Drive								
PTO Speed (RPM)	540/1000								
No. of Blades	30	36	42/48	48/54	54/60	60-66	66/72	72/78	78/84
Blade specifications	L type 5" / C type								
Weight (Kgs. Approx.)	480	505	530	555	580	605	630	655	680
Tractor Power (HP)	30-35	35-45	45-50	50-60	60-65	65-70	70-75	75-80	80-90



Heavy Duty Hitch



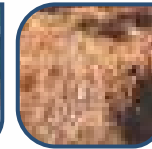
Gear Box



Spl. Boron Steel Blades



Parking Stand



Before



After

SWAN AGRO Super Series Rotary Tiller is especially designed for Hard soil, Black soil and Robust operation. This tiller is heaviest tiller among the Swan Agro Rotary Tiller range. This facility breaks hard and dense lumps of soil which saves possibility of jamming of tiller. This facility comes with heavy duty Gear Box and has more gap between main body and blades which facilitates the machine to be used in stony areas. Comes with an option of interchangeable blades from L-Type to C-Type. Available in working width 4', 5', 6', 7', 8', 9', 10', 11', 12' under robust/heavy operation.



Swan Agro



Features:

- ✓ Best used for inter cultivation
- ✓ Specially designed Leakproof Casted Gear Box
- ✓ Blades are tempered & made of Boron Steel from Italy
- ✓ Available with L-Type or C-Type Blades- Interchangeable
- ✓ Export Quality Heavy-Duty Gear Box
- ✓ Rotary Tiller frame is made of Heavy-Duty Pipe
- ✓ Nuts and Bolts are made of High Tensile Steel (10.9 Grade)
- ✓ Side Transmission is driven through Gears providing Smooth Drive & Longer Service Life
- ✓ Saves fuel & time
- ✓ Available from 0.80 mtr to 1.20 mtr size for 16 H.P to 24 H.P tractors
- ✓ Heavy-Duty PTO Shaft with Shear Bolt for overload protection

MINI SERIES ROTARY TILLER



TECHNICAL SPECIFICATIONS OF MINI SERIES ROTARY TILLER

Description/model	NSEMS RT 080	NSEMS RT 100	NSEMS RT 120
Overall Width (mm)	900	1100	1300
Tillage Width (mm)	800	1000	1200
Tillage Depth (mm)	100-120		
Gear Box	Single Speed / Multi Speed		
Side Transmission	Gear Drive		
PTO Speed (RPM)	540/1000		
No. of Blades	16	20	24
Blade specifications	L type 5" / C type		
Weight (Kgs. approx)	190	211	240
Tractor Power (HP)	16-20	20-22	22-24



P.T.O. Shaft with Cover



Single Speed \ Multi Speed
Gear Box



Gear Drive



Option of Sheet Metal Hitch



Before



After

Swan Agro Mini Series Rotary Tiller is especially designed for low HP Tractors. Its compact and light weight but strong design makes the machine suitable to be used on light soil, shallow tillage and wet lands.

Most appropriate tillage equipment for fruits and vegetable growers, rice growers, hobby farmers, landscapers, nurseries, vineyards, green house farmers and gardeners. Available in sizes 3', 4', & 5'.



Swan Agro



Features:

- ✓ Sheet metal- robust type hitch
- ✓ Layer type welding
- ✓ Helical type blade arrangement- boron steel blade made in Italy
- ✓ Higher clearance between blade and main body
- ✓ Full hinge plate & pipe passes through plate
- ✓ Bracket type, heavy duty gear box clamp
- ✓ Angled dust cover for circular/ smooth movement of mud
- ✓ Special designed deflector for smooth flow of sand
- ✓ Side handle cum guard
- ✓ Use of hard liner for protection against wear out
- ✓ Heavy duty gear box with casting thickness 10 - 12 mm
- ✓ Hanging gear box to reduce heat factor
- ✓ Side gear with support plate
- ✓ Automated powder coated plant

DUSTER SLEEK SERIES ROTARY TILLER



TECHNICAL SPECIFICATIONS OF DUSTER SLEEK SERIES ROTARY TILLER

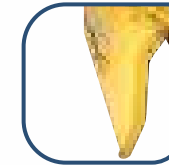
Description/model	NSE DSRT 125	NSE DSRT 150	NSE DSRT 175
Overall Width (mm)	1500	1750	2000
Tillage Width (mm)	1250	1500	1750
Tillage Depth (mm)	101-127		
Category	Cat. II		
Gear Box	Single Speed (11 X 20)		
Side Transmission	Gear (17 X 32 X 28)		
PTO Speed (RPM)	540		
No. of Blades	30	36	42
Type of Blades	L type 5" / C type		
Weight (Kgs)	220	250	280
Tractor Power (H.P.)	25-30	30-35	35-40



Sheet Metal- Robust
Type Hitch



Higher Clearance between
blade and main body



Deflector for
smooth flow of sand



Side Gear
with Support Plate

Swan Agro Duster Slick Rotary Tiller is especially designed for hobby farmers, vegetable growers, inter cultivation in orchard, nurseries, vineyards and garden. This model is suitable for tilling soil for seed bed preparation soil conditioning, fertilizer incorporation, weed control and land scrapping. Available in sizes 4', 5' & 6'.



Swan Agro

Features:

- ✓ For use in open fields for superficial ploughing, clods breaking, preparation of soil, sowing and burial of organic substances & remains
- ✓ Tillage Depth is 152 - 203 mm
- ✓ It can be used in both forms i.e., mounted as well as trailed
- ✓ High Quality Boron steel disc with 48-52 HRC hardness
- ✓ Easy to transport as it gets easily attached or mounted

HEAVY DUTY COMPACT MODEL DISC HARROW



TECHNICAL SPECIFICATIONS OF HEAVY DUTY COMPACT MODEL DISC HARROW

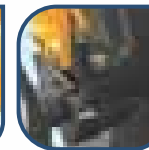
Description/model	NSCMDH 16	NSCMDH 18	NSCMDH 20	NSMMDH 22	NSCMDH 24
Frame (mm)	100x7 T (Sq. Pipe Frame)				
Gang Bolt/Axle (mm)	31 mm (Solid Sq. Rod)				
No. of Disc	16	18	20	22	24
Type of Disc	Notched Disc in front Gang & Plain Disc in rear Gang				
Gear Diameter (mm)	610 x 4.5 T (24") or 660 & 6 T (26")				
Width of Cut (mm Approx.)	1912	2128	2345	2562	2778
Distance Between Disc (mm)	228 (9 inch)				
Bearing Hub	6	8			
Weight (Kg. Approx)	805	850	905	970	1025
Tractor Power (HP)	50-60	65-75	80-90	100-110	115-135



Combination of Plain & Notched Disc



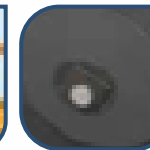
Gang Adjustment



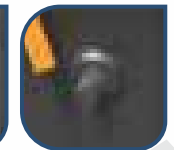
Bearing Hub



Adjustment Rod



Gang Lock (Rear)



Gang Lock (Front)

SWAN AGRO Compact Model Disc Harrow is used to open field working for the superficial ploughing, shattering of clods, preparation of soil for sowing. This facility has boron steel disc which effectively breaks clods. It has sturdy design and can easily be mounted and as well as trailed. Available in sizes 16,18,20,22,24 discs.



Swan Agro

Features:

- ✓ Swan Agro Offset Disc Harrow is used to prepare soil for sowing
- ✓ Frame is made from heavy duty pipe
- ✓ High tensile fasteners are used
- ✓ Discs are tempered and made of high quality Boron steel with hardness between 48-52 HRC
- ✓ Ideal tillage depth - 125 to 178 mm
- ✓ Easy mounting and attaching make Swan Harrow easy to transport
- ✓ Working angles can be easily adjusted

MOUNTED OFFSET DISC HARROW



TECHNICAL SPECIFICATIONS OF MOUNTED OFFSET DISC HARROW

Description/model	NSEODH 12	NSEODH 14	NSEODH 16	NSEODH 18	NSEODH 20	NSEODH 22	NSEODH 24
Frame (mm)	75 X 10 angle frame with 100 x 50 channel						
Gang Bolt/Axle (mm)	31 (Solid Sq. Rod) with split Gangs						
No. of Disc	12	14	16	18	20	22	24
Gang Arrangement	Single Gang			Split Gang			
Type of Disc	Notched Disc in front Gang & Plain Disc in rear Gang						
Disc Diameter (mm)	560 x 4 T(22inch)/610 x 5T (24inch) (boron steel)						
Width of Cut (mm Approx.)	1420	1635	1852	2068	2258	2502	2718
Distance Between Disc (mm)	228 (9 inch)						
Mounting Category	CAT - I / II (Optional)						
Bearing Hub	4		6	8			
Weight (Kg. Approx)	390	430	500	575	615	676	731
Tractor Power (HP)	30-40	40-50	50-60	60-70	70-80	80-90	90-100



Boron Steel Disc



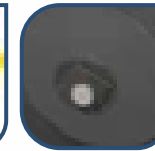
3 Pont Linkage



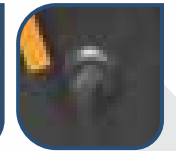
Bearing Hub



Robust Frame



Gang Lock (Rear)



Gang Lock (Front)

SWAN AGRO Mounted Offset Disc Harrow is used to open field working for the superficial ploughing, shattering of clods, preparation of soil for sowing. This facility has boron steel disc which effectively breaks clods. It has sturdy design and can easily be mounted and transported without ripping up the ground. Available in sizes 12,14,16,18,20,22,24 discs.



Swan Agro

Features:

- ✓ Swan Agro Disc Plough is designed to open new fields
- ✓ It is used for Soil Breaking, Turning, Raising and Mixing of soil
- ✓ Easily mounted on Tractor
- ✓ High clearance allows plough to operate in high crop residue
- ✓ Specially designed with heavy duty pipe frame for extreme conditions
- ✓ Option of converting extra kit into bottom plough

MOUNTED DISC PLOUGH



TECHNICAL SPECIFICATIONS OF MOUNTED DISC PLOUGH

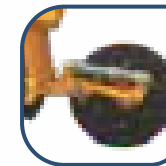
Description/model	NSMDP - 2	NSMDP - 3	NSMDP - 4	NSMDP - 5
Frame (mm)	Seamless Tubular Frame (OD 168, ID 146)			
Axle Type	Spindle			
No. of Disc	2	3	4	5
Mounted Cat.	CAT-II		CAT-III	
Type of Disc	Plain Disc			
Disc (Diameter)	660 X 6 T (26") or 710 X 7 T (28")			
Disc Spacing (mm)	570			
Width of cut (mm approx.)	500-550	875-925	1150-1200	1575-1625
Bearing Hub	2	3	4	5
Weight (Kgs. Approx.)	310	410	510	620
Tractor Power (HP)	50-60	65-80	85-100	105-125



Seamless Pipe



Bearing Hub



Coulter Assembly



Paking Stand



Special Boron Steel Blade

SWAN AGRO Disc Plough is manufactured as per international quality. The facility is designed to work in all type of soil for basic function such as soil breaking, soil turning and soil raising. They are made with forged alloy steel and are heat treated to work efficiently in hard and dry trashy land conditions. Available in 2 disc, 3 disc, 4 disc & 5 disc.

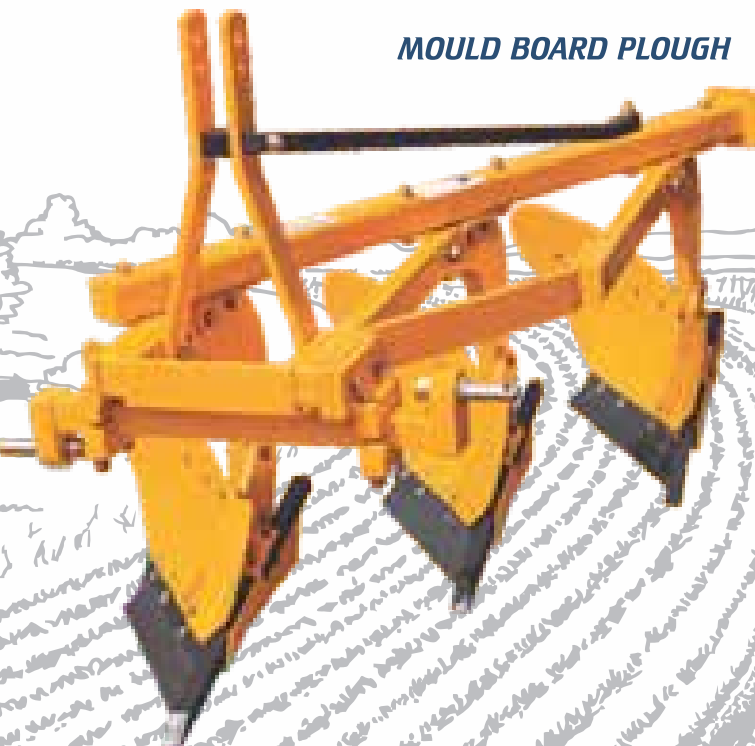


Swan Agro

Features:

- ✓ Swan MB Plough gives very good inversion and penetration of soil for tougher and thorough ploughing
- ✓ Ground clearance form under frame and unit to unit clearance to cope with the trash conditions
- ✓ Swan Agro MB plough has robust steel blade with bar points for toughest ploughing works
- ✓ Durable bar points which can be extended till the last possible length

MOULD BOARD PLOUGH

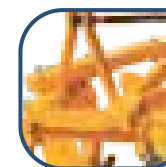


TECHNICAL SPECIFICATIONS OF MOULD BOARD PLOUGH

Description/model	NSE MBP - 2	NSE MBP - 3	NSE MBP - 4
No. of Furrow	2 Furrow	3 Furrow	4 Furrow
Frame (mm)	80 x 80 x 7 (Box)		
Tine (mm)	36 (Profile cut Single Piece)		
Length (mm)	1300	1880	2460
Height (mm)	1066		
Blade (mm)	54 x 100 x 10		
Mould Board (mm)	8		
Bar Point (mm)	40 x 25 (Bar Forged)		
3 Point Linkage Lever & Connecting rod (mm)	65 x 16 (Flat) & 32 (Square)		
Width of Cut (mm)	610	910	1210
Depth of Cut (mm)	350		
Weight (Kgs. Approx.)	215	320	430
Tractor Power (HP)	35-40	55-60	80-90



Rigid Frame



3 Point Linkage



Special Boron Steel Blade

SWAN AGRO MB Plough can handle the toughest ploughing job with outstanding penetration performance. This plough has special wear - resistance steel blade and bar points. These plough are designed by experts and can be easily mounted on tractor directly with ease.
Available in size 2 furrow, 3 furrow & 4 furrow.

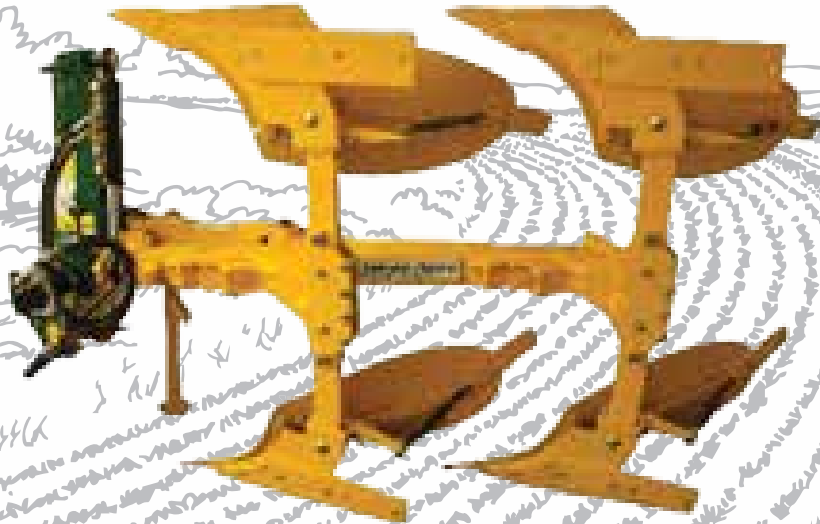


Swan Agro

Features:

- ✓ Swan Agro Reversible MB Plough gives excellent penetration of soil & provides excellent tilling and is suited for the toughest ploughing jobs
- ✓ Ground clearance from under frame and unit to unit clearance are perfect for coping with trashy conditions
- ✓ Adding an extra furrow or repositioning unit to allow extra clearance is quick and easy
- ✓ The plough has robust steel blade with bar points for toughest ploughing jobs
- ✓ Can be used in stony and rooted soil
- ✓ Durable bar point with maximum extendable capacity
- ✓ Hydraulic turnover mechanism

REVERSIBLE MOULD BOARD PLOUGH



TECHNICAL SPECIFICATIONS OF REVERSIBLE MOULD BOARD PLOUGH

Description/model	NSE RMB - 2	NSE RMB - 3
No. of Furrows	2	3
Box Frame (mm)	97 x 97 x 9 T (Box)	
Tyne (mm)	80 x 36 (Boron Steel)	
Mould Board (mm)	8	
Plough Share (mm)	10	
Point (mm)	100 x 15 (Forged)	
Head Stock Bearing	32213, 33015	
Turnover Mechanism	Hydraulic	
Width of cut (mm)	700	1050
Depth of cut (mm)	355	
Weight (Kgs. Approx.)	430	590
Safety	Shear Bolt	
Tractor Power (HP)	55-70	75-100



Rigid Frame



Hitch



Boron steel Blade



Turn Buckle Mechanism



Tynes

SWAN AGRO Hydraulic Reversible plough can handle the toughest ploughing job with outstanding penetration performance. The under frame and unit-to-unit clearance are adequate to cope with trashy conditions. This facility has safety bolt protection which prevents breakage of mould board or tynes in case of any obstacles coming during ploughing operation.

Available in 2 & 3 furrow



Swan Agro



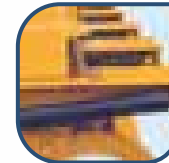
Features:

- ✓ Uniquely designed spring helps absorb shock enabling other tynes to work at correct depth.
- ✓ Heavy duty angles give strength to spring loaded assemblies, as once spring assembly fixed, it cannot be moved or strained out of position
- ✓ Prepares seed bed fast and economically
- ✓ Used for aerating and loosening soil to a depth of 9"
- ✓ Protects the humidity of soil and increases water penetration capacity
- ✓ Designed for toughest operations
- ✓ Suitable for use in stone and root obstructed soil
- ✓ Prepares the soil for excellent growth of crops

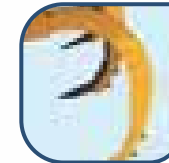
EXTRA HEAVY DUTY SPRING LOADED CULTIVATOR

TECHNICAL SPECIFICATIONS OF HEAVY DUTY SPRING LOADED CULTIVATOR

Description/model	NSE HSLT 9	NSE HSLT 11	NSE HSLT 13	NSE HSLT 15
Fram (mm)	75 x 40		100 x 50	
Spring (mm)	WD 10 & OD 50, 28.5 Coils			
Tynes (mm)	50 x 25 (Forged)			
Pairs (mm)	65 x 65 x 6 (MS Angle)			
Frame Bolts	M 12 x 35 High Tensile			
Tyne Bolts	M 12 x 35 High, M 18 x 65 mm High Tensile			
Linkage 3 Point (mm)	50 x 16 (Front) 50 x 16 (Rear)		65 x 16 (Front) 50 x 16 (Rear)	
Shovels (mm)	8 (EN-42)			
Length (mm)	2000	2457	2914	3371
Width (mm)	850	850	850	850
Height (mm)	585	585	585	585
Mounting Category	CAT II			
Weight (Kg. Approx.)	285	245	405	480
Tractor Power (HP)	40-45	50-55	60-65	70-75



Heavy Duty Springs



Tine Made of EN-9
(For Hard Soil)



Robust Frame for
Toughest operations



EN - 42 Shovel
(For Robust Use)

SWAN AGRO have marked a distinct position in the market by providing a precisely engineered range of Extra Heavy Duty Spring Loaded Cultivator. The facility is manufactured by utilizing the best grade raw material in conformity with industrial standards.

Swan Agro cultivator is suitable for use in stone and root obstructed soil. Available in size 9 tynes, 11 tynes, 13 tynes & 15 tynes



Swan Agro

Features:

- ✓ Robust frame for extreme soil conditions
- ✓ Heavy-Duty Square frame
- ✓ Adjustable size and depth of ridge
- ✓ Disc are made of special boron steel
- ✓ Produce ridge with max. Width of 1000 mm
- ✓ Available in 2 & 4 bottoms to make 1 or 2 Ridges respectively

DISC RIDGER

TECHNICAL SPECIFICATIONS OF DISC RIDGER

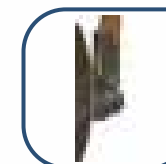
Description/model	NSE DR - 1	NSE DR - 2
Frame (mm)	102 x 102 x 7 (Square Tubular Frame)	
Axle Type	Spindle	
No. of Disc	2	4
Type of Disc	Plain Disc	
Disc Diameter(mm)	660 x 6 T (26")	
Max. width between Ridge (mm)	1000	
Ridge Height (max. mm)	330	
Bearing Hubs	2	4
Weight (kg. approx)	224	435
Tractor Power (H.P.)	50-65	75-110



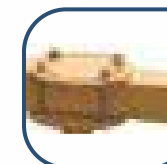
Boron Steel Disc



3 Point Linkage



Bearing Hub



Dual Angle Adjustment

SWAN AGRO Disc Ridger is used to develop ridges for Tobacco, Potato & other vegetables in the field. It can produce ridge with maximum width of 1000 mm. Available in 2 bottoms & 4 bottoms to make one ridge & two ridges.

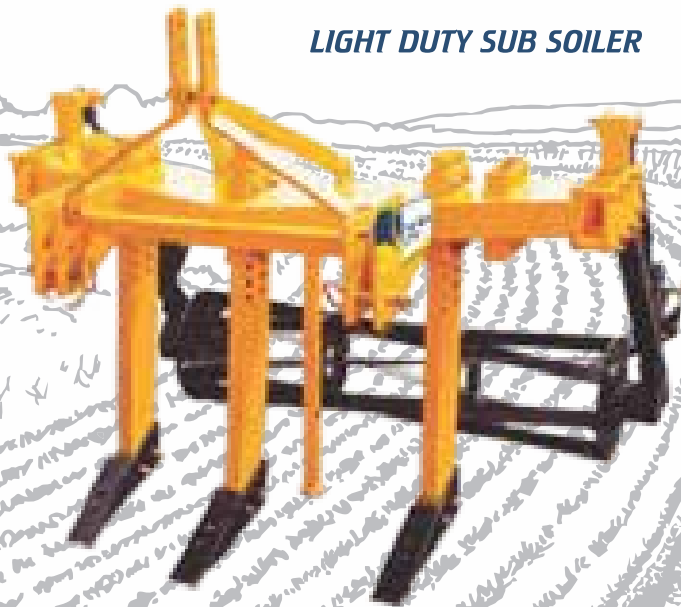


Swan Agro

Features:

- ✓ Can plough up to 55 cms deep
 - ✓ Drought and dry conditions by increasing ground water storage capacity
 - ✓ Increases soil turn over by reaching deeper organic matter layers
 - ✓ Adjustable depth & width of ploughing available for 2 & 3 arm sub-soiler
 - ✓ Depth can be adjusted by top links
 - ✓ SWAN AGRO Sub Soiler are deep tillage implements specially designed for breaking up hard pan layers and loosening the subsoil allowing better drainage, root growth and mineral osmosis
 - ✓ Wide range of roller/Crumbler available, which helps in breaking bigger lumps to smaller clods
- Also it helps in depth control and steady run of the Sub-Soiler

LIGHT DUTY SUB SOILER



TECHNICAL SPECIFICATIONS OF LIGHT DUTY SUB SOILER

Description/model	NSE SS -1	NSE SS -2	NSE SS -3
No. of Tyne	1	2	3
Length (mm)	510	550	830
Width (mm)	660	1220	1520
Height (mm)	1060 -1370		
Tyne (mm)	150 x 25		
Width of Cut (mm)	70		
Mounting Category	Cat -II		
Accessories (Optional)	Crumbler		
Crumbler	33.7 x 25 mm Round Pipe		
Crumbler Length (mm)	650	1220	1530
Weight with crumbler (Kgs. Approx.)	160	250	440
Weight without crumbler (Kgs. Approx.)	68	195	280
Tractor Power (H.P)	35 - 50	60 - 75	75 -90



3 Point Linkage



Depth Adjustment



Shovel Made of EN-42 Material



Crumbler Optional

SWAN AGRO Light Duty Sub Soiler is designed for deep tillage and breaking up hard pan layers and loosening the subsoil allowing better drainage, root growth and mineral osmosis. This implement can plough upto 550 mm deep with heavy duty chisels.

Available with 1, 2, 3 Arms.



Swan Agro

Features:

- ✓ Tynes are specially designed and capable of creating upto 70 cm depth
- ✓ Can be safely used for heavy duty applications, as the shear bolt arrangement protects implements from damage due to hidden obstacles like underground stones and roots
- ✓ Swan Agro Sub Soiler helps increase soil turning by reaching deeper organic matter layers
- ✓ High-wear resistant steel used for the shovel, which gives it a long life even in tough conditions
- ✓ Swan Agro Sub Soilers are deep tillage implements specially designed for breaking hard pan layers and loosening subsoil
- ✓ Allows better drainage, root growth and mineral osmosis
- ✓ Swan Agro Sub Soiler series helps preserve moisture during heavy rainfall which is very important for crop to withstand low rainfall and drought periods

HEAVY DUTY SUB SOILER

TECHNICAL SPECIFICATIONS OF HEAVY DUTY SUB SOILER

Description/Model	NSE HSS 1	NSE HSS 2	NSE HSS 3
Frame (mm)	125X125X6	150x150x8	
Length (mm)	690	1072	
Width (mm)	800	1230	1520
Height (mm)	1220	1440	
Width of Cut (mm)	70	800	1215
Tyne Size (mm)	150 x 36		
No. of Tyne	1	2	3
Mounting Category	Cat-II		
Weight (Kgs. Approx.)	105	450	520
Shovel Size (mm)	70x10x305		
Tractor Power (H.P)	40-50	55-75	85-115



Safety Bolt



Tyne and Angle of Attack



3 Point Linkage



Shovel

SWAN AGRO Heavy Duty Sub Soiler is especially designed for operation on hard soil. This implement removes draught or used for removing stumps or rocks. The Tynes are single profile cut and angled which makes deep penetration in the soil. The Tynes can penetrate up to 70 cm deep in the soil improves deep reach of water thereby increase soil quality. Available width 1, 2 & 3 tynes



Swan Agro

Features:

- ✓ Heavy duty frame with cutting chamber
- ✓ Option of mulching grass and crop residue
- ✓ Rotor with hammer flails and Inner protected supports
- ✓ Option of coupling CAT 1 & 2
- ✓ Clutch Type Gear Box
- ✓ Lower power consumption with fully balanced rotor

MULCHER



TECHNICAL SPECIFICATIONS OF MULCHER

Description/model	NSE - MU 150	NSE - MU 175	NSE - MU 200	NSE - MU 220
Overall Width (mm)	1750	1950	2150	2350
Working Width (mm)	1600	1800	2000	2200
Hammer	14	16	18	20
Belts	4	4	4	4
Roller (in mm)	160	160	160	160
Weight (Kgs. Approx.)	495	520	555	595
Tractor Power (HP)	45-55	55-65	75-90	90-110



Clutch Type PTO



Heavy Duty Hitch



Side Drive



Gear Box

SWAN AGRO Mulcher is sturdy, heavy duty and reliable machine developed using high quality material. This facility is reliable for mulching vineyards, orchards pruning & cutting grass and bushes. When passed over the grass or left out straw are cut into fine pieces and left in yard where they quickly decomposes improving overall organic structure of soil.

Using Swan Agro Mulcher yields higher productivity in turn ensures greater satisfaction. Available in size 1.50 mtr, 1.75 mtrs, 2.00 mtrs & 2.20 mtrs.



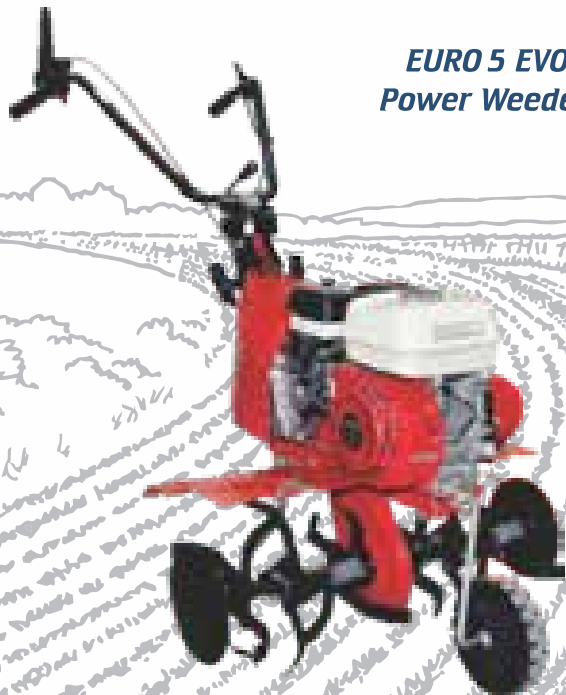
Swan Agro



Features:

- ✓ Best for inter-cultivation use.
- ✓ Soil preparation in small gardens and in farms of hilly areas.
- ✓ Swan EURO 5 EVO Model used only for dry soil.
- ✓ Swan EURO 5 EVO Model easy to handling when it works at field.
- ✓ This model has 4.8 HP. Honda engine with heavy Metal transmutation.
- ✓ Seamless pipe used for manufacturing Power Weeder Rotor assembly.
- ✓ Blades are tempered & made of Boron Steel From Italy.
- ✓ Nut & Bolt is made of high tensile steel (10.9 grade)
- ✓ Fuel efficacy 0.7ml per hour.

EURO 5 EVO Power Weeder



TECHNICAL SPECIFICATIONS OF EURO 5 EVO Power Weeder

Description/ Models	SPECIFICATION
Engine	Honda GX160, Petrol Engine.
Engine Technology	Air-cooled 4-stroke OHV 25° inclined single cylinder
Horsepower	4.8 Hp / 3.6 KW
Displacement	163 cc
Fuel Tank Capacity	3.1 l
Tillage Width	20" to 30"
Gear	2 Forward, 1 Reverse
Starting System	Recoil
Air Cleaner	Oil bath
Oil Capacity	0.6 l
Weight	51 Kg



Engine



Gear



Rotor

SWAN AGRO EURO 5 Power Weeder is intended for inter cultivation and mechanized farming in small fields. This model has Honda engine- Petrol model. This model has tillage width of 24".

This model can be used for working only on Dry Soil and used for cultivation of vegetables, orchards, coconut farming , tea gardens, & other inter-cultivation works.



Swan Agro

Features:

- ✓ Best for inter-cultivation use.
- ✓ Soil preparation in small gardens and in farms of hilly areas.
- ✓ Berseem cutting, Grass cutting, Crop residue cutting. Best for inter-cultivation use.
- ✓ Swan P70 Model used only for dry soil.
- ✓ Swan P70 Model easy to handling when it works at field.
- ✓ This model has 6.5 HP. Honda engine with heavy Metal transmutation.
- ✓ Seamless pipe used for manufacturing Power Weeder Rotor assembly.
- ✓ Blades are tempered & made of Boron Steel From Italy.
- ✓ Nut & bolt is made of high tensile steel (10.9 grade).
- ✓ Fuel consumption 0.9ml. Per hour.

P70 Power Weeder



TECHNICAL SPECIFICATIONS OF P70 Power Weedereeder

Description/ Models	SPECIFICATION
Engine	Briggs & Stratton 850 Series, Petrol Engine.
Engine Technology	Single cylinder, 4-stroke, air-cooled, OHV (Overhead Valve)
Horsepower	6.5 Hp / 4.8 KW
Displacement	190 cc
Fuel Tank Capacity	1.1 l
Tillage Width	22"
Gear	2 Forward, 2 Reverse
Other accessories	Rotary scythe
Weight	58 Kg (Without Accessories)



Accessory



Engine



Gear Parts

SWAN AGRO P70 Power Weeder is intended for inter cultivation and mechanized farming in small fields. This model has Briggs & Stratton engine- Petrol model. This model has tillage width of 22" and is available with attachment like Rotary Synth & Rotary Slasher for cutting of crops and grass. This model can be used for working only on Dry Soil and used for cultivation of vegetables, orchards, coconut farming , tea gardens, & other inter-cultivation works.



Swan Agro

Features:

- ✓ Best for inter-cultivation use.
- ✓ Soil preparation in small gardens and in farms of hilly areas.
- ✓ Swan RTT-3 Model is used only for dry soil.
- ✓ Swan RTT-3 Model is easy to handle while working in field.
- ✓ This model has 5.5HP. Honda engine with heavy Metal transmutation.
- ✓ Seamless pipe used for manufacturing Power Weeder Rotor assembly
- ✓ Blades are tempered & made of Boron Steel From Italy.
- ✓ Nut & Bolt is made of High Tensile Steel (grade 10.9)
- ✓ Fuel consumption 0.8ml.Per Hour.

RTT3 Power Weeder



TECHNICAL SPECIFICATIONS OF RTT3 Power Weeder

Description/ Models	SPECIFICATION
Engine	Honda GX200, Petrol Engine.
Engine Technology	Air-cooled 4-stroke OHV 25° inclined single cylinder
Horsepower	5.5 Hp / 4.1 KW
Displacement	196 cc
Fuel Tank Capacity	3.6 l
Tillage Width	24"
Gear	1 Forward, 1 Reverse
Starting System	Recoil
Air Cleaner	Oil bath
Oil Capacity	0.6 l
Weight	74 Kg



Gear



Engine



Type

SWAN AGRO RTT3 Power Weeder is intended for inter cultivation and mechanized farming in small fields. This model has Honda engine- Petrol model. This model has tillage width of 24".

This model can be used for working only on Dry Soil and used for cultivation of vegetables, orchards, coconut farming, tea gardens, & other inter-cultivation works.



Swan Agro

Features:

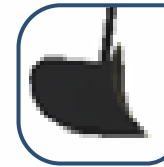
- ✓ Best for inter-cultivation use.
- ✓ Soil preparation in small gardens and in farms of hilly areas.
- ✓ Swan Z2 Model is used only for dry soil.
- ✓ Swan Z2 Model is easy to handle while working in field.
- ✓ This model has 2.22 HP. Honda engine with heavy Metal transmutation.
- ✓ Seamless pipe is used for manufacturing Power Weeder Rotor assembly.
- ✓ Blades are tempered & made of Boron Steel From Italy.
- ✓ Fuel Consumption 0.5ml per hour

Z2 Power Weeder



TECHNICAL SPECIFICATIONS OF Z2 Power Weeder

Description/ Models	SPECIFICATION
Engine	Briggs & Stratton 450E Series, Petrol Engine.
Engine Technology	Single cylinder, 4-stroke, air-cooled, OHV (Overhead Valve)
Horsepower	2.22 Hp / 1.66 KW
Displacement	125 cc
Fuel Tank Capacity	0.8 l
Tillage Width	16"
Gear	1 Forward, 1 Reverse
Other Accessories	Ridging Plough
Weight	30 Kg



Ridger



Rotor



Engine

SWAN AGRO Z2 Power Weeder is intended for inter cultivation and mechanized farming in small fields. This model has Briggs & Stratton engine- Petrol model. This model has tillage width of 18" and is available with additional attachment like Rear Ridger for making ridges in inter-cultivation works. This model can be used for working only on Dry Soil and used for cultivation of vegetables, orchards, coconut farming , tea gardens, & other inter-cultivation works.



Swan Agro

Features:

- ✓ Roto Seeder is used for sowing all types of seeds (Wheat, fodder etc.)
- ✓ Swan Roto seeder enables cultivation, harrowing, leveling and sowing in single operation
- ✓ Fertilizer and seeds are loaded in separate boxes and delivered simultaneously
- ✓ Swan Agro Rotoseeder can be used in dry and wet soil
- ✓ Suitable for 45 – 75 HP Tractor power

ROTO SEEDER

TECHNICAL SPECIFICATIONS OF ROTO SEEDER

Description/model	NSE RO 200	NSE RO 225	NSE RO 250
Box Sheet (mm)	2		
Main Frame (mm)	2.5		
Three Point Linkage	CAT II		
No. of Blades	48	54	60
No. of Seed Distribution Pipe	12	12	14
Working Width (mm)	2000	2250	2500
Length of Main Frame (mm)	2300	2250	2800
Overall Length (mm)	2300	2550	2800
Overall Width (mm)	100		
Overall Height (mm)	1500		
Seed Tank Capacity (Kgs.)	60	75	90
Fertilizer Tank Capacity (Kgs.)	80	95	110
Total Weight (Kgs. Approx)	680	740	800
Tractor Power (H.P)	45-50	50-60	60-75



Heavy Duty Body



Feeder Assembly



Clutch Type PTO



Gear Box

Swan Agro Roto Seeder is 21st centuries latest application for preparing seedbed and sowing seeds into soil at the same time. Earlier seed planting and seedbed preparation was done manually and took long time, yet could not ensure even balance throughout. Swan Agro Roto Seeder has overcome this limitation and using this facility seedbed preparation and sowing can be done at same time.

Suitable for sowing crops like Maize, Wheat, Soya, Mustard, Pea etc.

Available in size 5', 6', 7'. Seed Drill can be fitted only on Standard Series & Super Series Rotary Tiller.



Swan Agro

Features:

- ✓ Seed Drill is used after tilling the field and on hard soil
- ✓ Swan Agro Seed Drill is used for sowing of wheat, Maize, mustard, Pea etc. in fully tilled fields.
- ✓ Minimize load on tractor with our specially designed front wheel tires
- ✓ Depth of seed sowing is controlled by the two wheels with option of adjustment of row spacing
- ✓ Available in various models - 9, 11 & 13 rows

SEED DRILL

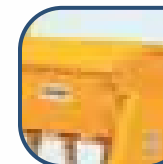


TECHNICAL SPECIFICATIONS OF SEED DRILL

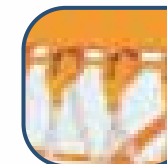
Description/model	NSED 60	NSED 75	NSED 90
Overall Width (inch)	72	87	102
Working Width (inch)	60	75	90
Number of Rows	9 rows	11 rows	13 rows
Row Spacing (inch)	7.5"		
Seed Capacity (kg)	65	95	120
Fertilizer Capacity (kg)	70	90	15
Weight (Kgs. approx)	300	330	360
Tractor Power (H.P)	35	40-45	50-70



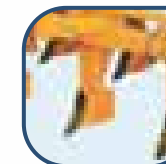
3 Point Linkage



Agitator & Sliding Orifice



Feeder Assembly



Shovel

SWAN AGRO Seed Drill is a device that sows the seeds for crops by metering out the individual seeds, positioning them in the soil, and covering them to a certain average depth. This facility is used for sowing different crops such as wheat, barley, maize, peas, black grams, pulses etc in tilled field with fertilizer. . The machine is available in side wheel driving mechanism & central wheel driving mechanism.
Available in 9, 11, 13 rows.



Swan Agro

Features:

- ✓ Available in 2 and 4 Rows
- ✓ Fully automatic
- ✓ Automation enables single person handling
- ✓ Agitator helps remove seed blockage problems
- ✓ Double seeding prevention through conveyor vibration mechanism
- ✓ Row to row adjustment option available from 600 to 660 mm
- ✓ Fertilizer tank attached with the machine

POTATO PLANTER

TECHNICAL SPECIFICATIONS OF POTATO PLANTER

Description/Model	NSE PPR 2	NSE PPR 3
No. Rows	2	3
No. Furrow Opener	2	3
No. of Ridge maker	3	4
Distance between rows (mm)	600-660	
Working Depth (mm)	130-150	
Working Width (mm)	1320	1980
Powered by	Wheels	
No. of cups	2x34	4x34
Size of Potato Seeds	30-75 (cut or uncut)	30-75 (cut or uncut)
Fertilizer Tank (Kgs.)	80	Not applicable
No. of Conveyor	2	4
Hopper capacity (kgs.)	240	420
Planting Capacity (Acre/hrs.)	1.25	2.5
Total Length(mm)	2100	
Total Width (mm)	1700	3600
Total Height (mm)	1550	
Total Weight (unladen) (Kgs. Approx.)	650	950
Potato Planting distance(mm)	100-125-150-175-200-225-250-300	
Tractor Power (H.P.)	40-60	60-75
Disc Size (mm)	425	NA



Bowls with Belt



Chain Drive



Boron Steel Blades



Parking Stand



Back View

SWAN AGRO Potato Planter is the farm equipment for sowing seed potatoes. Backed by our team of professionals, we are counted among the nonparallel manufacturer and supplier of Automatic Potato Planter, from India. The Potato Planters we make available, undergo numerous quality-tests before the final dispatch. Swan Agro Potato Planter is available in sizes 2 row & 3 row.



Swan Agro

Features:

- ✓ The Distribution system of Swan fertilizers spreader has been developed after extensive R & D on best combination of cone angle and revolution speed with diameter orifice of tray
- ✓ Helps distribute over greater distance with homogeneous quantity on each vane
- ✓ Facility of slitted leavers allows for scattering on left or right according to requirement
- ✓ Heavy-duty gear box with best combination of gears to absorb sudden changes in power
- ✓ Baking of hopper is done after painting in order to attain perfect hardness and for better resistant
- ✓ Covers area of 45ft in single pass

FERTILIZER SPREADER

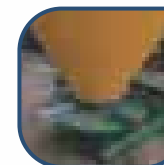


TECHNICAL SPECIFICATIONS OF FERTILIZER SPREADER

Description/model	NSEFS 500
Capacity (Litre)	500
Capacity (Kg)	250
Height (mm)	1130
Weight (Kg)	63
Spreading width (Feet) Granular	26.5-46
Transmission Ratio	1:1
Agitator	Extra
Tractor Power (H.P)	20 (minimum)



Protecting Shield



Rotating Vanes



Hopper

SWAN AGRO Fertilizer Spreader is used for spreading dry granular fertilizer and small seeds in the fields. This machine is very easy to operate and has high capacity. The power is transferred from PTO of tractor.



Swan Agro

Features:

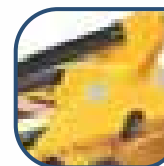
- ✓ Swan Agro Potato Harvester enables mechanical uprooting of crops like potatoes which reduces human effort and saves time
- ✓ Enables excellent soil crush with good combination of working structure
- ✓ Special conveyor chain system reduces load; prevents crop damage & failure and extends service life
- ✓ Easily to fix chain and belt
- ✓ Maintains machine balance by transferring power to both sides with specially designed transmission
- ✓ SS Chain Type Cage or Belt Type Cage option available
- ✓ Single plate body
- ✓ Both side drive of conveyor with belt

POTATO HARVESTER



TECHNICAL SPECIFICATIONS OF POTATO HARVESTER

Description/model	NSE POH 48	NSE POH 52
No. Rows	2	2
Working depth (mm)	130-200	
Working Width (mm)	1220	1320
Powered by	Gear Drive	
Cage Type	Belt / SS Chain	
Harvesting Capacity (Acre / Hrs)	1 Acre Per Hour	
Total Length (mm)	2200	
Total Width (mm)	140	
Total Height (mm)	1150	
Total Weight (unladen) (Kgs. Approx.)	490/630	605/645
Roller For Bed Preparation	Yes	Yes
Tractor Power (H.P)	40- 60	40- 60



Hitch



Cage



Gear Box



Operation View

We are a celebrated Manufacturer and Supplier of Potato Digger in India. Our manufacturing is backed with advance manufacturing unit where this heavy duty machine is fabricated as per the set international standards. Our team of skilled engineer's quality checks every digger on parameters of functioning, reliability and durability. Potato Diggers are available in different specifications in order to suit diverse and available in different cages – Stainless Steel or Rubber Cage options.



Swan Agro

Features:

- ✓ Harvesting and Binding of Grain Crops in a single operation
- ✓ Used for Grain crops of Height up to 20 to 50 mm
- ✓ Harvesting and Binding of 1.23 Acre of field in 1 Hour

REAPER BINDER



TECHNICAL SPECIFICATIONS OF REAPER BINDER

Description/model	NSERB 30
Function	Harvesting & Binding of Grain crops in a Single operation
Crops	Wheat, & sesame crops having height 850 to 1100 mm
Field Capacity	0.5 Hectares/Hour (1.23 acre/hr.)
Height of Cut (mm)	20-50
Cutting Width (mm)	1370
Length (mm)	3200
Width (mm)	2000
Height (mm)	800
Weight (Kgs. Apporx)	390
Tractor Power (HP)	30-50



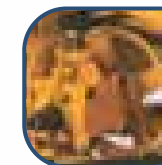
Collecting Arms



Jute / Nylon Roll Box



Hitch



Drive Gear Box



Cutter Bar

SWAN AGRO Reaper Binder is the result of latest technology, premium quality components and our expert technocrats. The crafty design provides aesthetic look to the products with sturdy build up.

Reaper-Binder is a unique harvesting machine that reaps the crop as well as binds it simultaneously. This Innovative Mechanical machine ensures 100% recovery of straw with negligible grain losses at a surprisingly low cost of operation. This machine is mainly used in Wheat & sesame crops



Swan Agro

Features:

- ✓ Specially designed outer gear bearing support
- ✓ Stone trap protection
- ✓ Heavy-duty chasis
- ✓ Easy flow of straw
- ✓ Easy drawable grain storage tray
- ✓ Rear light for night operation
- ✓ All rotating parts are balanced independently
- ✓ Free tool kit and spare parts

STRAW REAPER



TECHNICAL SPECIFICATIONS OF STRAW REAPER

Description/model	NSE ST 622
Cutter Bar (mm)	2190 mm
No. Of Blades in Cutter Bar	28
No. of Fingers in Cutter bar	15
Reel Width	2050
No. of Pipes in Reel	5
RPM	410
Diameter of Thresher Drum (mm)	677
Width of Thresher Drum (mm)	1380
RPM	840-900
No. of Blades, Thresher	238
No of Blades, Basket	55
No of Blades, Channel	17
No of Blowers fan	2
No of blades per blower fan	4
Working Capacity (Acre/hrs.)	1.5
Tyre	7.00x19
Weight (Kgs. Approx)	1880
Tractor Power (H.P)	45-65



Discharge Tube



Reel Assembly



Cutter Bar



Gear Box

SWAN AGRO Straw Reaper is result of rich industry experience and knowledge that we have been able to manufacture, export and supply Straw Reaper. This facility is used for cutting, threshing as well as cleaning the straw in one operation. Offered Reaper is manufactured using supreme quality components and the latest technology by our dexterous technocrats.



Swan Agro

Features:

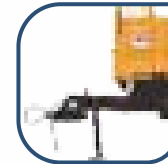
- ✓ Press Panel doors made of corrugated sheet
- ✓ Removable doors fixed to the pillars and front for easy loading/unloading
- ✓ Easily transportable as it gets easily attached/mounted
- ✓ Well designed for towing and loading stability
- ✓ Double stage hydraulic cylinder
- ✓ Flexibility of loading/unloading goods/material like farm produce by simply tipping them; saves overall operating cost of transportation
- ✓ Heavy-duty SKF bearings world class hub, Axle with tipping mechanism enhances the life of the trailer (durability & reliability)

TIPPING TRAILER



TECHNICAL SPECIFICATIONS OF TIPPING TRAILER

Description/Model	NSE 2WT-3Ton	NSE 2WT-5Ton	NSE 2WT-10Ton	NSE 2WT-12Ton
Outer Dimension (Feet)	9Ft(L) x 5 ft(W) x 2 Ft (H)	10Ft(L) x 6 ft(W) x 2 Ft(H)	13Ft(L) x 6 ft(W) x 2.5 Ft(H)	14Ft(L) x 7 ft(W) x 2.5 Ft(H)
Main Chasis (mm)	150 x 75	200 x 75	200 x 75	200 x 75
Second Chasis (mm)	100 x 50	100 x 50	125 x 65	125 x 65
Floor Sheet (mm)	4mm	4mm	5 mm	5 mm
Side Wall Sheet (mm)	2.5mm	3mm	3 mm	3 mm
Tyre	7.50 x 16	8.25 x 16	10.00 x 20	10.00 x 20
Ring Hitch (mm)	45mm	50 mm	65 mm	65 mm
Hydraulic Cylinder Capacity (ton)	5 ton	7 ton	12-15 ton	12-15 ton
Axle (mm)	75 mm	80 mm	96 mm	125 mm
Weight (Approx.) (Kgs.)	900	1250	1800	2000
Tractor Power (H.P.)	25-35	35-55	55-75	55-90



Draw Bar & Parking Jack



Hydraulic Cylinder



Corrugated Sheet



Chassis

SWAN AGRO Trailer is can be used for industrial or agricultural purpose. This facility is used for loading /unloading goods/ material like stones, muds, seeds, leafs, beans or any another agricultural produce. It comes in Tipping and Non Tipping version with 2 wheel and 4 wheel option in single or double axle. Available in 3 Ton, 5 Ton, 10 Ton & 12 Ton



Swan Agro

QUALITY SPARE PARTS



Side Gear with safety plate



**Born Steel Blades,
from Italy**



Heavy Duty Hitch



High Tensile Nuts



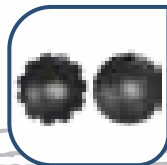
PTO with Safety Mechanism



Bearing Hub for Harrow



Bearing Hub for Plough



Boron Steel Discs



Bearings



Leaf Spring



Trailer Axle



Auger

NOTES:

[illegible]

Swan Agro